



MS860i Mini-Slot®

Features

- **High first-pass read rate**
- **Optional hand-held port**
- **Stainless-steel top plate**
- **"Touch-on" power save mode**
- **Optional hardened glass**
- **Easy to install and program**

Metrologic's MS860i laser bar code scanner is a high-speed, aggressive in-counter scanner with a history of reliable performance and quality. The MS860i is one of the most efficient, affordable slot scanners in the industry. Designed for use where counter space is limited, the compact, durable housing of the MS860i is nearly half the size and weight of traditional in-counter scanners.

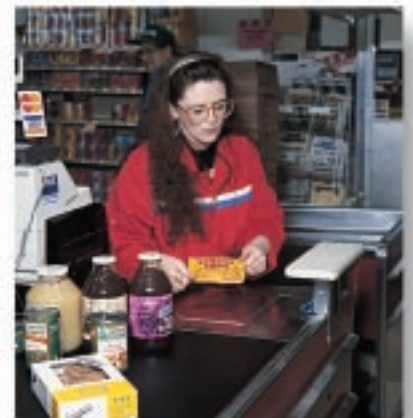
A large omnidirectional scan pattern and high first-pass read rate make the MS860i ideal for pass-through scanning. The MS860i autodiscriminates all standard bar codes.

The MS685 generates a raster scan pattern and is designed for document processing and work in process applications, where the bar code is presented to the scanner in the same orientation. The raster pattern creates a more concentrated scan area and is most appropriate for scanning longer truncated bar codes.

The MS860i can read damaged or truncated codes on the first pass, making it ideal for reclamation and coupon redemption applications.

The MS860i is available with full RS232, OCIA, Light Pen Emulation, IBM 46xx and Keyboard Wedge interfaces. Metrologic also offers a patented hand-held option, which allows users to connect the MS941 hand-held scanner to the MS860i for greater scanning versatility.

Programming the MS860i is easy using bar code menus from ScanSelect™ or by using Metrologic's ScanSet® IBM®-PC compatible software program.



MS860i Mini-Slot®

OPERATIONAL

Light Source	Visible Laser Diode 675 nm ± 5 nm
Laser Power	0.525 mW (peak)
Depth of Scan Field (programmable)	0 mm - 203 mm (0" to 8")
Width of Scan Field	152 mm (6") @ 76 mm (3"); 203 mm (8") @ 165 mm (6.5")
Scan Speed	2000 scan lines per second
Scan Pattern	5 fields of 4 parallel lines (omnidirectional)
Minimum Bar Width	0.191 mm (7.5 mil)
Decode Capability	Autodiscriminates all standard bar codes; for other symbologies call Metrologic
System Interfaces	RS232, OCIA, OCR A/B Parallel, IBM 468X/469X, Light Pen Emulation, Point-to-Point RS422, Keyboard Wedge
Print Contrast	35% minimum reflectance difference
Number Characters Read	Up to 48 data characters read
Roll, Pitch, Yaw	360°, 60°, 60°
Beeper Operation	3 tones or no beep; 3 volume settings
Indicators (LED)	Green = laser on, ready to scan Red = good read

MECHANICAL

Dimensions	97 mm (3.8")H x 175 mm (6.9")D x 173 mm (6.8")W
Weight	2.45 Kg (5.4 lbs)
Cable	Standard 1.8 m (6'); for other cables call Metrologic
Mounting Options	In-Counter Ring (standard); Side-Mount (optional)

ELECTRICAL

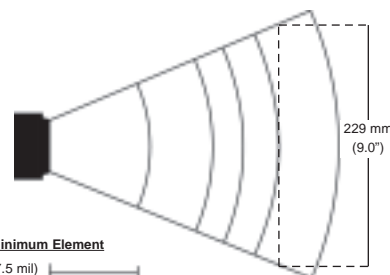
Input Voltage	11-30 VDC ± 0.50 V
Power	8.4 W, host system or wall transformer
Operating Current	350 mA @ 24 V
Standby Current	175 mA @ 24 V
DC Transformers	Class 2; 24 VDC @ 750 mA
Laser Class	CDRH: Class IIa; EN60825-1:1994/A11:1996 Class 1
EMC	FCC Class A

Operating Temperature	0°C to 40°C (32°F to 104°F)
Storage Temperature	-40°C to 60°C (-40°F to 140°F)
Humidity	5% to 95% relative humidity, non-condensing
Light Levels	Up to 4842 Lux (450 footcandles)
Contaminants	Sealed to resist airborne particulate contaminants
Ventilation	None required

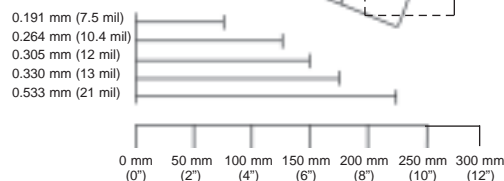
Specifications subject to change without notice.
Printed in Germany, April 2000
E&OE



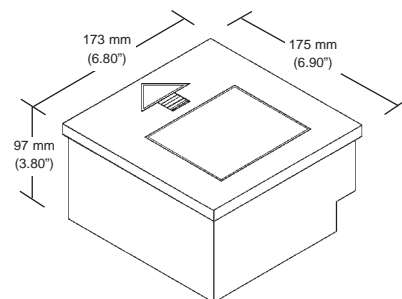
Scan Area



Bar Code Minimum Element



Dimensions



USA
Metrologic Instruments, Inc.
Tel. 1-800-ID-METRO
Fax 1-609-228-6673
info@metrologic.com

South America
Metrologic Instruments
Tel. 55-11-5505-6568
Fax 55-11-5505-1681
info@sa.metrologic.com

Brazil
Metrologic do Brasil Ltda
Tel. 55-11-5505-2396
Fax 55-11-5507-2301
info@br.metrologic.com

Asia
Metrologic Asia (Pte) Ltd
Tel. 65-842-7155
Fax 65-842-7166
info@sg.metrologic.com

Metrologic Instruments GmbH | Dornierstrasse 2 | 82178 Puchheim, Germany
Tel: +49 (0) 89 89 019 0 | Fax: +49 (0) 89 89 019 200 | Email: info@europe.metrologic.com

REGIONAL OFFICES

Germany
Metrologic Instruments GmbH
Dornierstrasse 2, 82178 Puchheim
Tel: +49 (0) 89 89 019 0
Fax: +49 (0) 89 89 019 200
Email: info@de.metrologic.com
www.metrologic-instruments.de

Italy
Metrologic Instruments Italia s.r.l.
Via Emilia 68, 40064 Ozzano dell'Emilia (BO)
Tel: +39 (0) 5 16 51 19 78
Fax: +39 (0) 5 16 52 13 37
Email: info@it.metrologic.com

Spain
Metrologic Eria Ibérica
Julián Camarillo 29, Edificio Diapasón, 28037 Madrid
Tel: +34 (91) 3 27 24 00
Fax: +34 (91) 3 27 38 29
Email: info@es.metrologic.com
www.metrologic.es

Metrologic®
www.europe.metrologic.com